



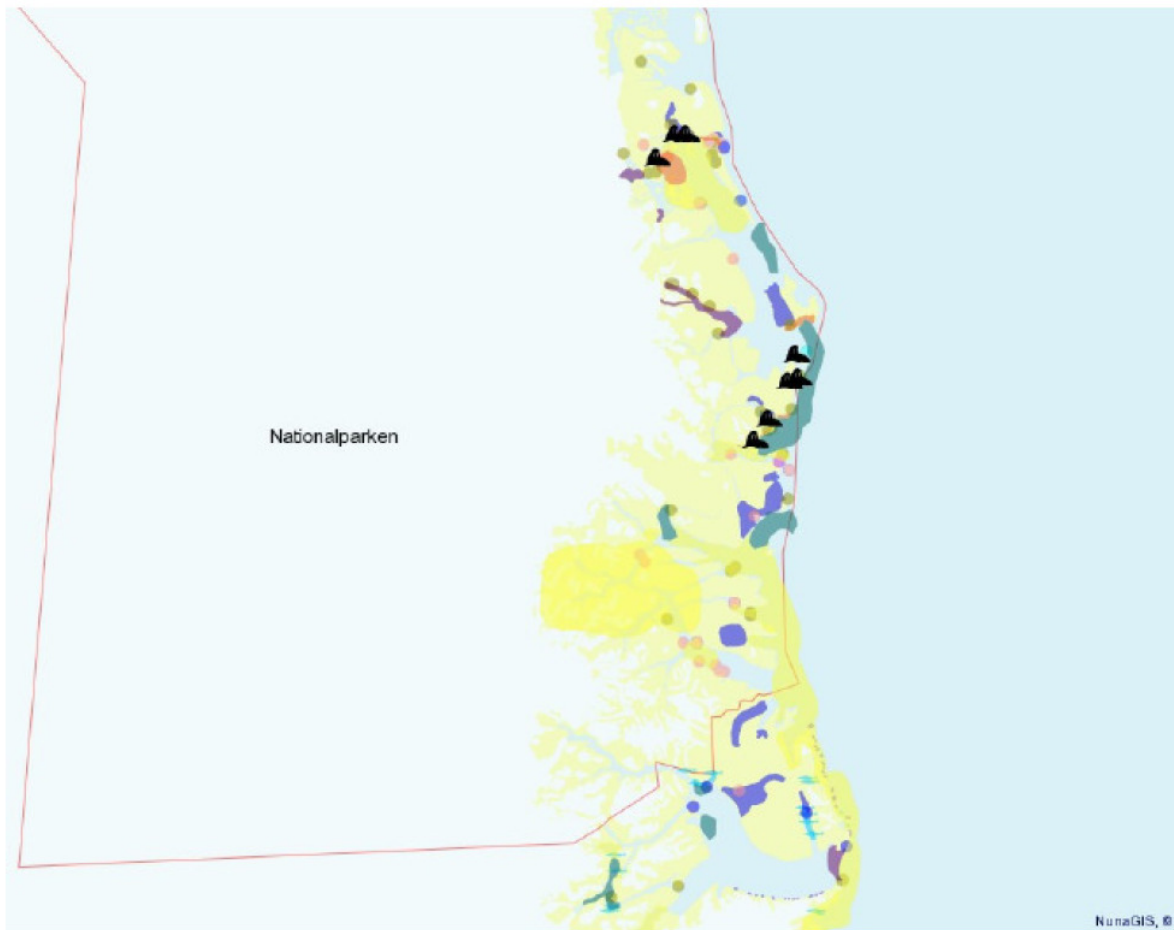
## Annex 2a. Sensitive Periods

|   | Vulnerable period   | Access regulation     |                        |
|---|---|-----------------------|------------------------|
|   |   | Min. distance on land | Min. distance on water |
|   | Season  |                       |                        |
| Walrus ( <i>Odobenus rosmarus</i> )               | Haul-out sites: 15. July -1. October  | 400 m                 | 75 m                   |
|   | Females with young:<br>1. May-15. October   | 400 m                 | 75 m                   |
| Narwhal ( <i>Monodon monoceros</i> )              | Important areas   |                       | 500 m                  |
| Arctic wolf ( <i>Canis lupus</i> )                | Breeding holes and rendezvous-sites<br>(June.-Sept.)  | 1000 m                | -                      |
| Great northern diver ( <i>Gavia immer</i> )       | Nesting sites<br>1 June – 31Aug.  | 500 m from nest       | 500 m from nest        |
| Pink-footed goose ( <i>Anser brachyrhynchus</i> ) | Breeding and moulting areas:<br>1 June – 31 May/ 15 June-10 Aug.<br>Breeding colony: 15 May-10 July | 1000 m                |                        |
| Barnacle goose ( <i>Branta leucopsis</i> )        | Breeding and moulting areas:<br>1 June – 31 May/ 15 June-10 August                                  | 1000 m                |                        |
| Brent goose ( <i>Branta bernicla</i> )            | Breeding and moulting areas:<br>1 June – 31 May/ 15 June-10 August                                  | 1000 m                |                        |
| Sea bird colonies (except Guillemot and Eider)    | 1 June - 15. September  |                       | 200 m*                 |
| Thick-billed Guillemot ( <i>Uria lomvia</i> )     | 1 June - 15. September  |                       | 5000 m*                |
| Eider ( <i>Somateria mollissima</i> )             | 15 July - 30 September  |                       | 500 m*                 |

\* It is prohibited to enter all bird colonies. Access within the given radius is permitted until 50 m when exercising extreme care (i. e. avoid all unnecessary noise, approach cautiously, stop if birds shows sign of distress, stay less than 30 minutes).



## Annex 2b. Sensitive Areas



- |                    |                    |
|--------------------|--------------------|
| Walrus             | Little Auk         |
| Polar bear         | Black Guillemot    |
| Narwhale           | Barnacle goose     |
| Ringed Seal        | Common Eider       |
| Walrus             | Glaucuss Gull      |
| Polar bear         | Arctic Tern        |
| Narwhale           | Ivory Gull         |
| Ringed Seal        | King Eider         |
| Barnacle goose     | Pink-footed Goose  |
| Common Eider       | Brent Goose        |
| Glaucuss Gull      | Northern Fulmar    |
| Arctic Tern        | Thick-billed murre |
| Ivory Gull         | Kittiwake          |
| King Eider         | Ross Gull          |
| Pink-footed Goose  | Little Auk         |
| Brent Goose        | Black Guillemot    |
| Northern Fulmar    | Arctic char        |
| Thick-billed murre | Arctic char        |
| Kittiwake          | Preserved areas    |
| Ross Gull          | Ice                |
|                    | Land               |